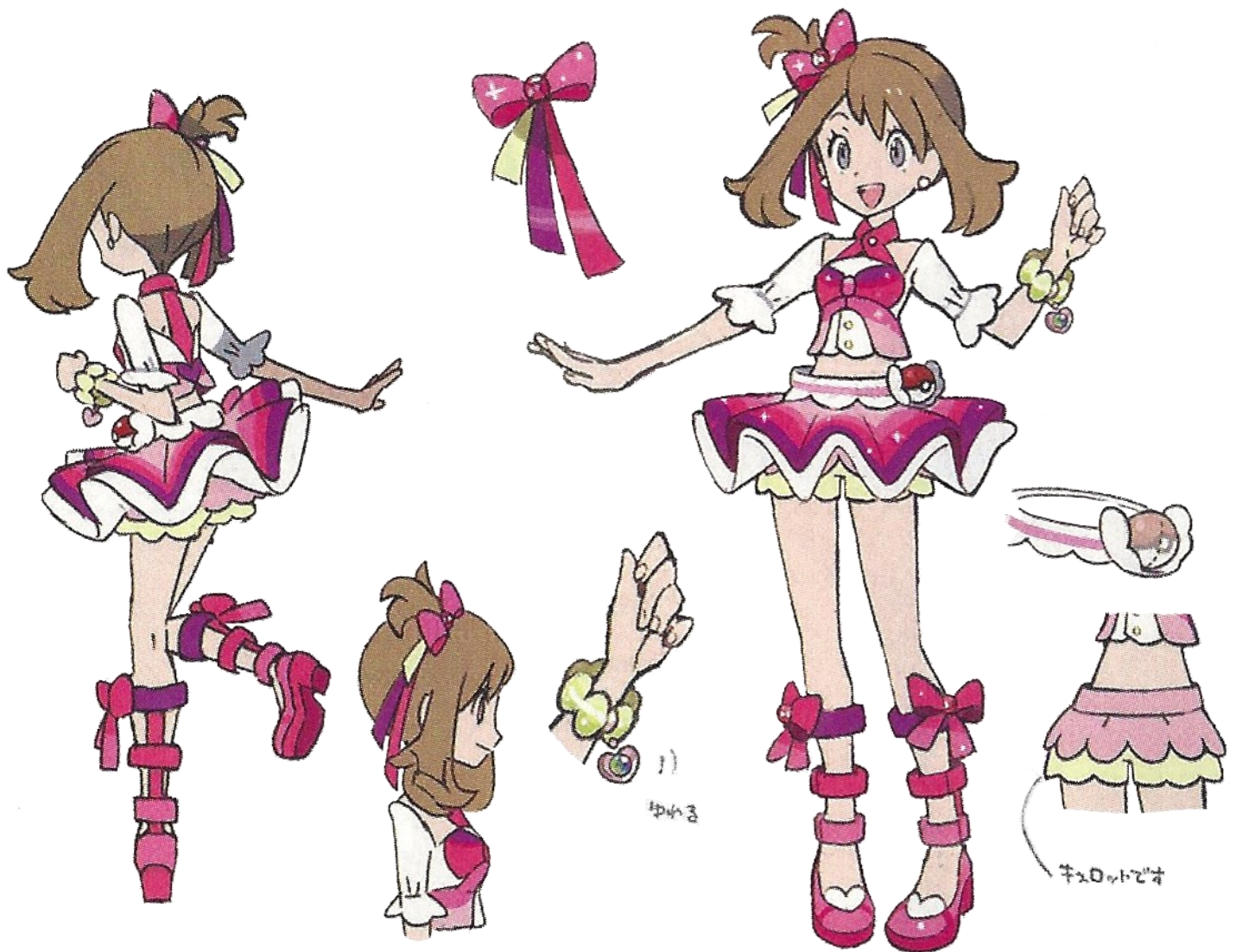


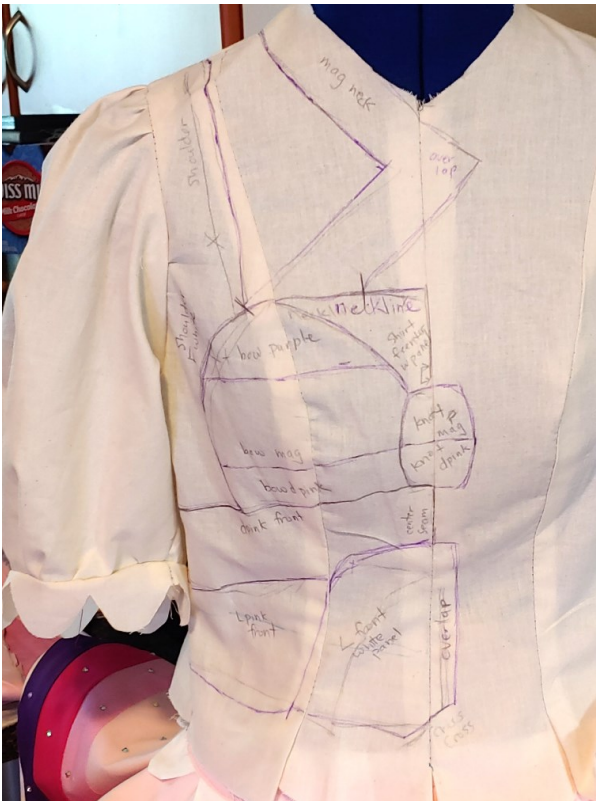
May (Contest Attire)

Pokemon Omega Ruby / Alpha Sapphire

Leafnin Cosplay Sisters—Master's division



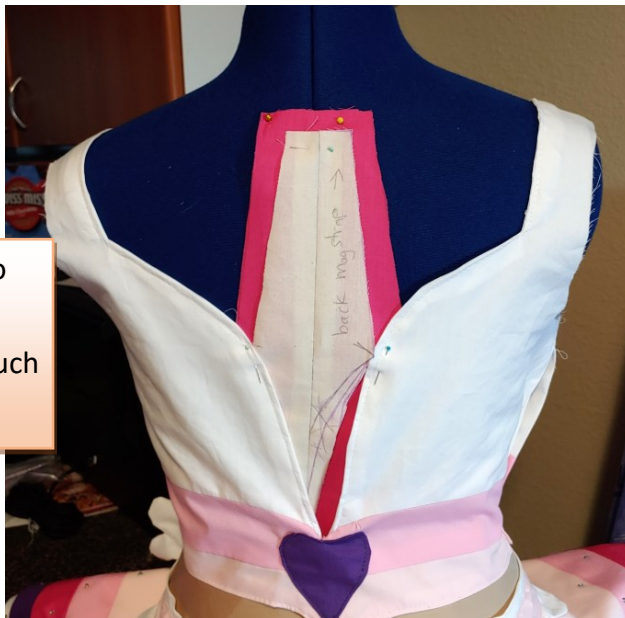
Rainbow shirt



Custom pattern built off a tunic pattern. It involved many pieces that wanted to flee my desk



Strap placement to prevent the shirt from shifting as much as possible



Hand-painted PokeBall buttons to match Dawn's buttons



Hidden side zipper

Skirt support structure



Waistband is designed like a thick tutu basque used to hold up pancake tutus. Pattern custom-made using paper on a dress form



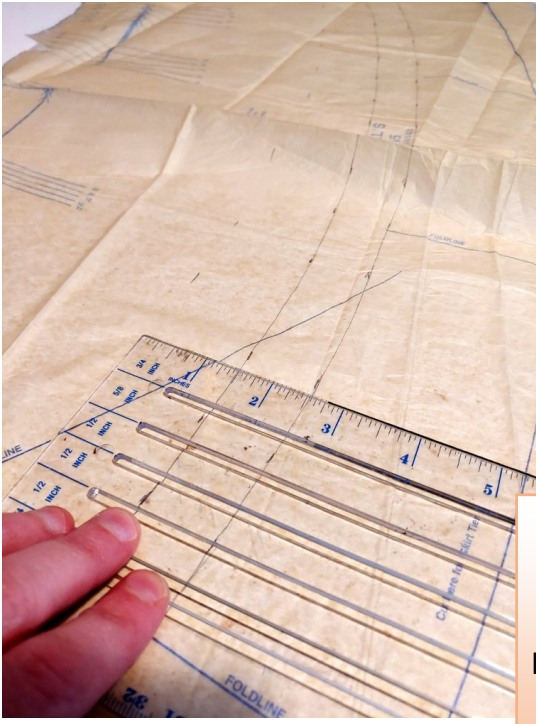
The basque gets its strength from duck canvas, contouring, and slider clips to support the skirt's heavy weight



Metal hoop skirt was designed after ballet pancake tutus and Lolita hoop skirts and is completely removable



Double-layer skirts



Pattern drafted from a double circle skirt pattern, each tier measured out using a tailor's ruler



Both layers lined with horsehair braid at the bottom. White layer has thick horsehair for max flounce



Skirts folded and sewn directly to the supporting basque to create the wavy edges



Embellishments

Over a hundred hotfix rhinestones mimic the sparkling effect in the concept art



Homemade PokeBall pattern made of felt sits at the hip



Shoes



Hand-painted shoes with fabric straps and of course rhinestones



Wig



Small ponytail
patterned with paper
then cut out with felt
and stuffed.



Wefts teased then glued
down to the felt to make
a ponytail

It's removable and naturally
caked in glitter and
rhinestones

