

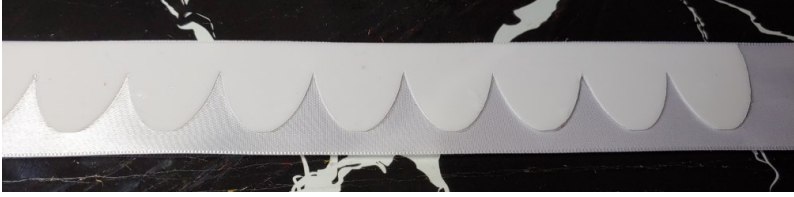
Dawn (Contest Attire)

Pokémon Brilliant Diamond / Shining Pearl

Leafnin Cosplay Sisters—Master's division



Fluffy petticoat



50 yards of satin ribbon cut out using a soldering iron using a vinyl cutter stencil as a guide



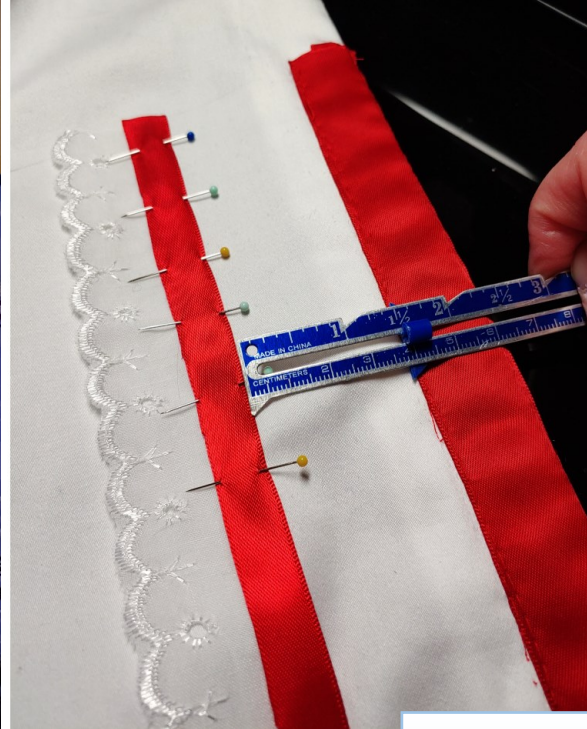
Petticoat is 2 layers of 3 tiers each, made from a spool of wedding tulle. It took over my living room



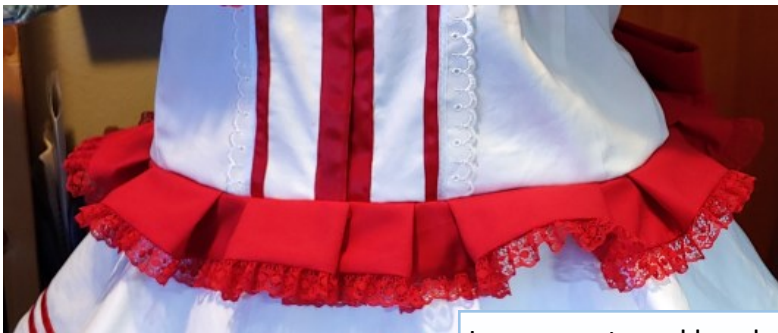
Two-piece dress—shirt



Shirt base is a princess seam dress shirt pattern with snaps up the front



Details all precisely measured for accurate placement



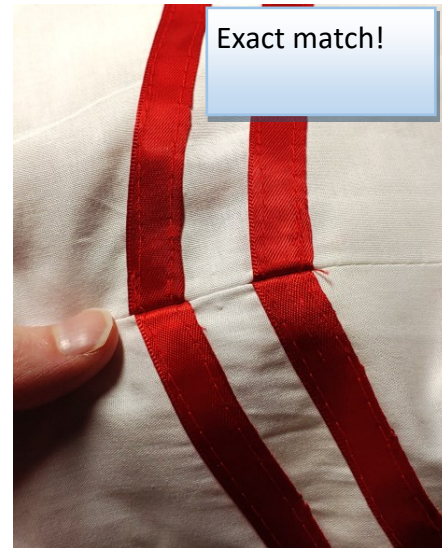
Lacy accents and hand-painted PokeBall buttons give the dress a sweet Lolita feel



Two-piece dress—skirt



Full circle skirt with pockets and a back zipper

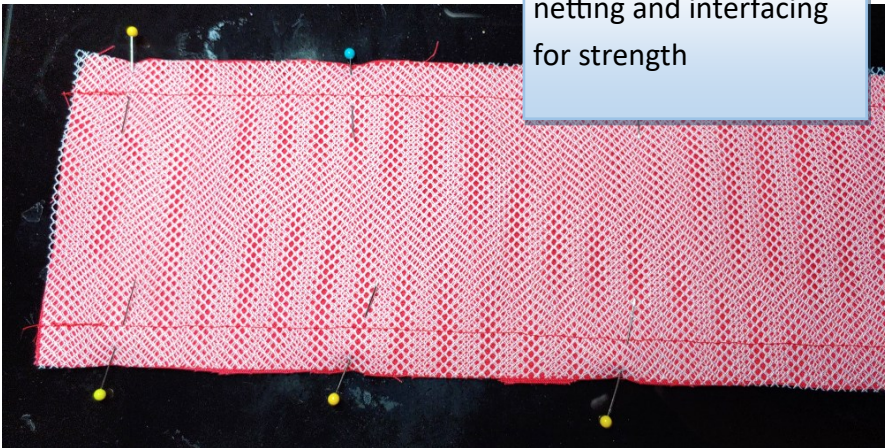


Exact match!

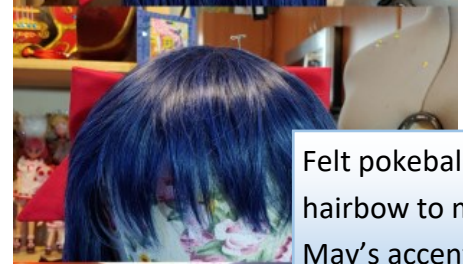
So much flounce! It's all horsehair braid



Giant bows



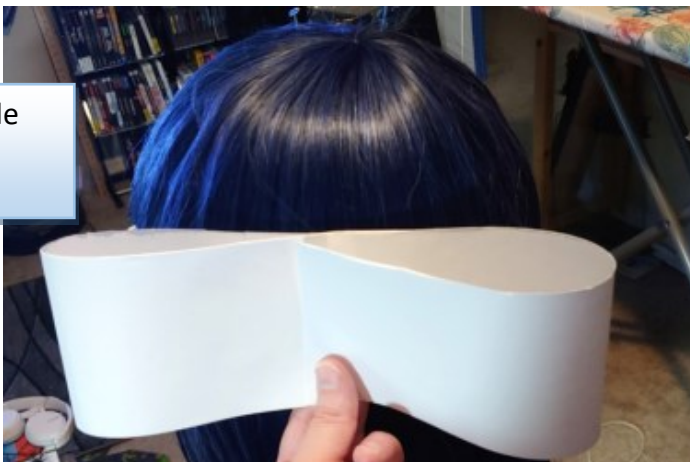
Lined with petticoat netting and interfacing for strength



Felt pokeball in hairbow to match May's accents



Custom-made patterns



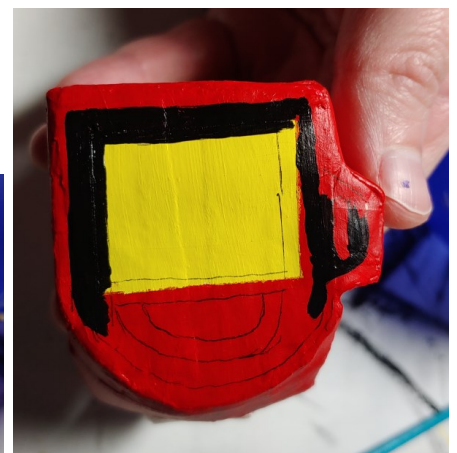
Poketch



Poketch is made from a watch band, paper mache, and a taco box



Paper mache is sanded to make it ultra smooth



Lots of small, hand-painted details