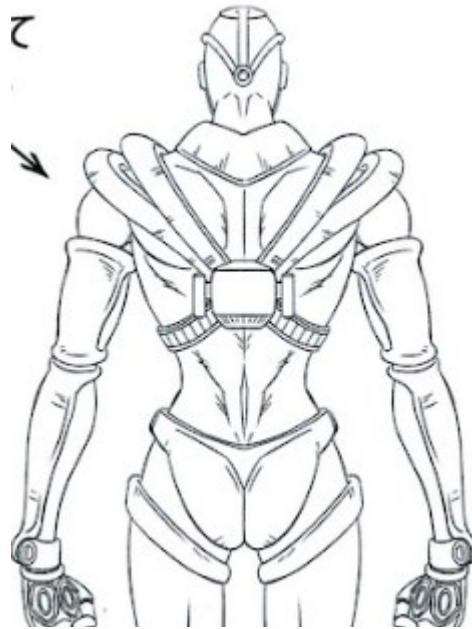
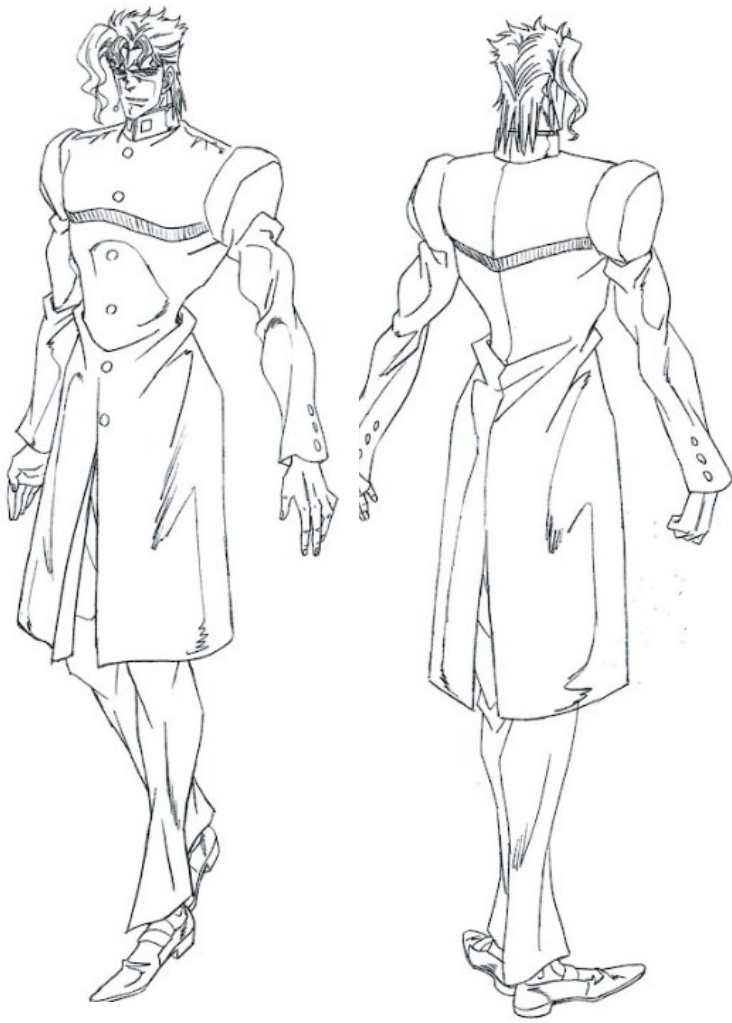


Noriaki Kakyojin (with Hierophant Green) JoJo's Bizarre Adventure

Leafnin Cosplay—Master's division



関係者外秘

#02～

ラフ稿

131107

基本的に自由なので
色々と遊んでください。



Jacket and pants



Jacket is customized and tailored from a Cosplay by McCall's coat pattern. Pants are from a suit pattern with pockets added

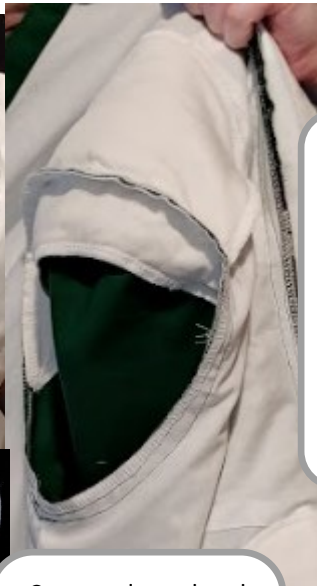
Patterning!



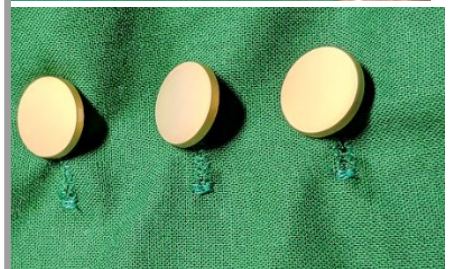
Jacket lined only in the body to control heat. Front is faced to avoid seeing the lining when buttoned



Final!



All the button-holes are real, though the sleeve ones are sewn shut after I kept catching my fingers in them



Custom sleeve head rolls and shoulder pads made out of quilt batting add structure to the jacket

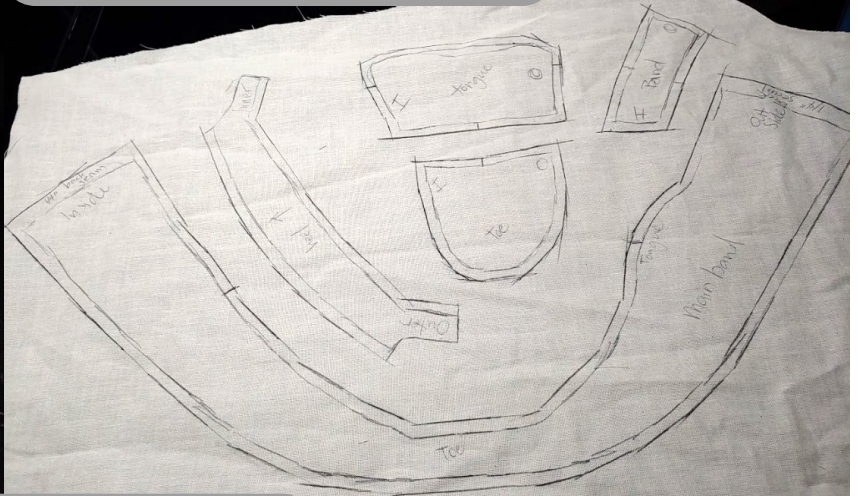


Snaps and an underlap keep the collar shut

Shoes



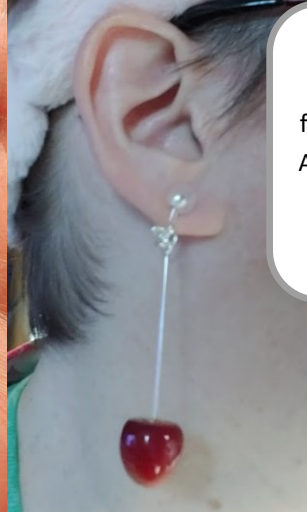
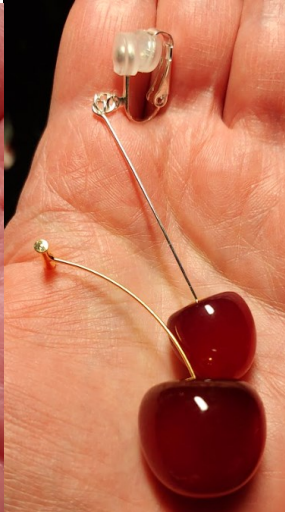
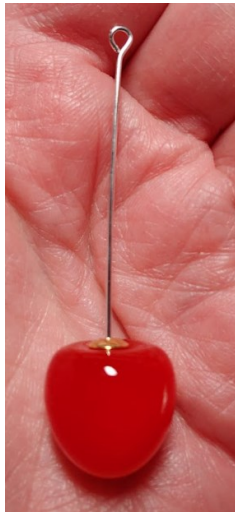
I don't own any loafers, so I made some out of my favorite Mary Janes. Pattern is made from wrapping my foot in plastic wrap and tape and drawing it right on the shoe!



Careful top stitching makes them look like real loafers!



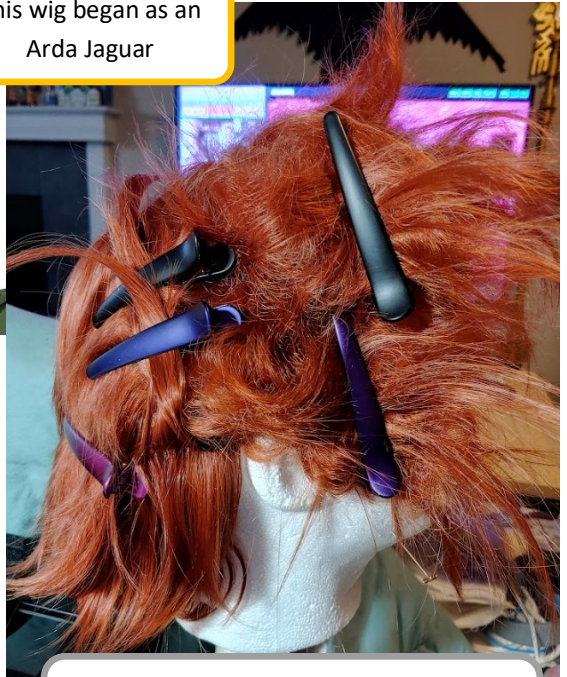
Earrings



Kakyoin's iconic cherry earrings are modified from cheap earrings from Amazon. Added a straight connector bar and clip-ons for comfort!

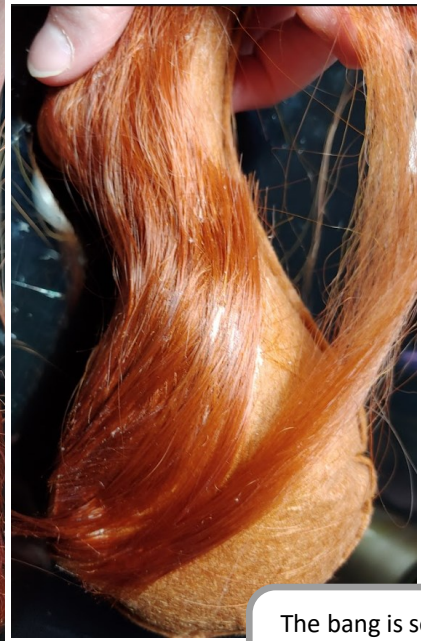
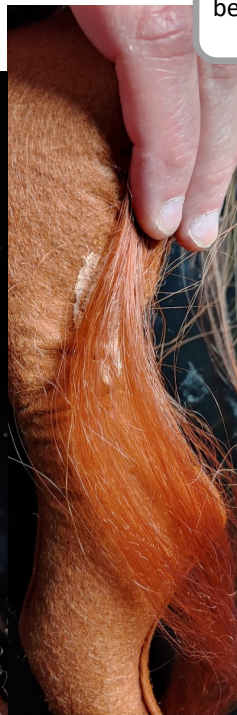
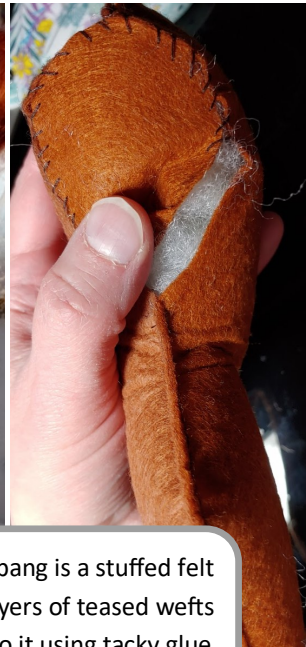
Wig styling

This wig began as an Arda Jaguar



Kakyojin's iconic hair involves a giant squiggle bang and swept back hair. I used the Nendoroid for inspiration on how to feather the sides and back with anime design sheets for the bang

The entire wig is teased and fluffed before being frozen in place with Aussie hairspray

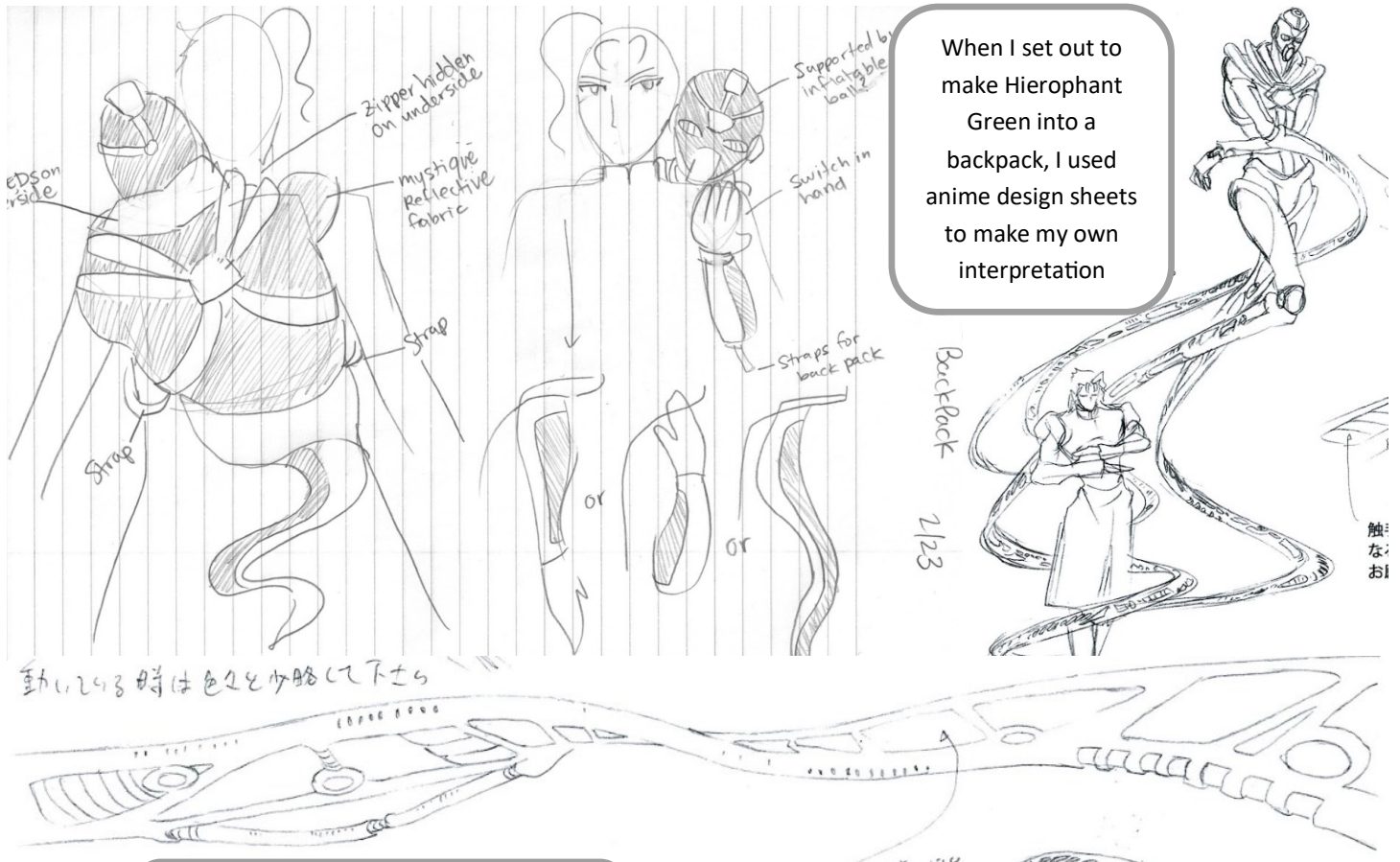


The squiggle bang is a stuffed felt pillow with layers of teased wefts glued down to it using tacky glue and a hair dryer

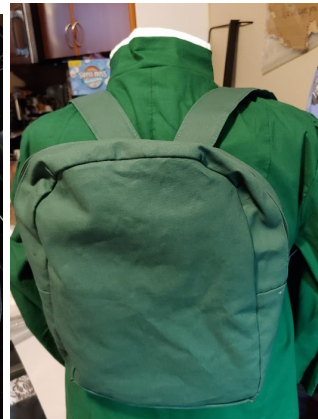
The bang is sewn to the wig using a curved needle



Hierophant Green backpack



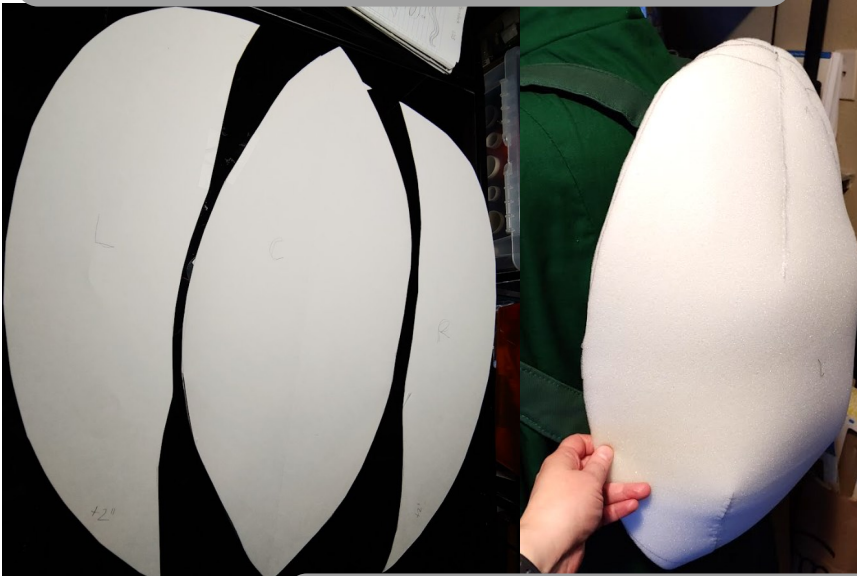
But first, I needed a base to build on. I drafted and patterned a fully lined mini canvas backpack with many pockets



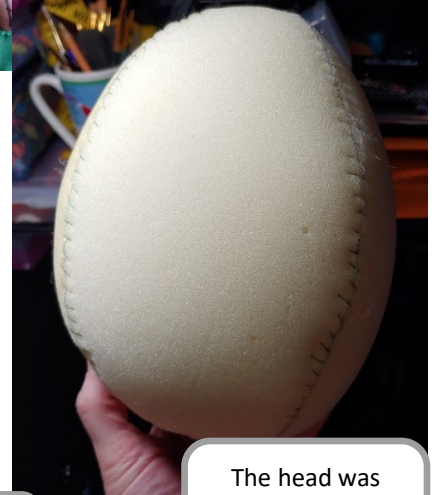
I tested the strength of the backpack at SakuraCon to ensure it had the strength to become a Stand and would suit my needs

Hierophant Green backpack—building the body

The whole base is built using 1/2" open cell furniture foam, custom patterned, and hand sewn with small whip stitches.



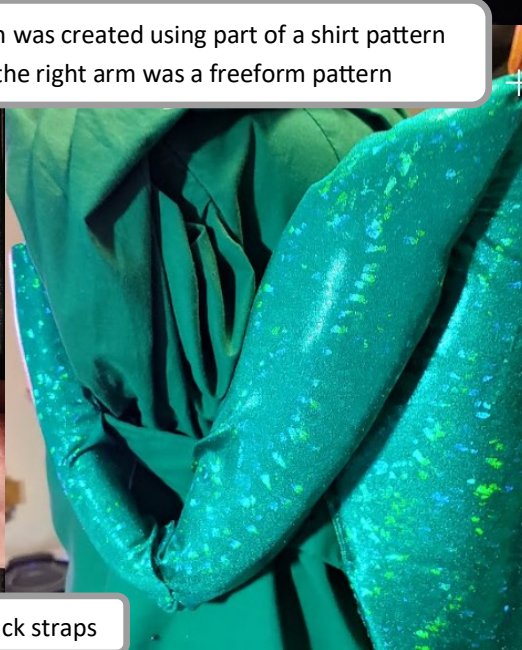
The body is patterned like an egg, permanently sewn to the backpack and covered with spandex



The head was made from an easter egg pattern



The left arm was created using part of a shirt pattern while the right arm was a freeform pattern



Both arms are permanently sewn to the backpack straps

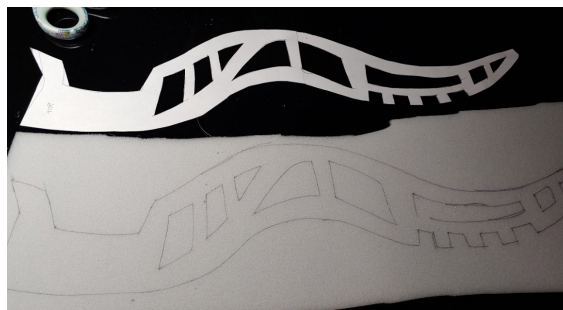
Hierophant Green backpack – all the details



Fiberfill makes great puffy details. Super plush too!



The plushiness combined with layers of felt, folded spandex, and 1/4" foam made for cool patterns and designs



The cutouts were the most complex and fun. Each one was sketched out by hand then cut out in 1/4" foam



The knit is then wrapped around the foam and sewn to the back



The finished cutouts are wrapped around the tail and arm. Others are sewn directly to the green spandex or along the side to make 2-sided pieces using tiny whip stitches

