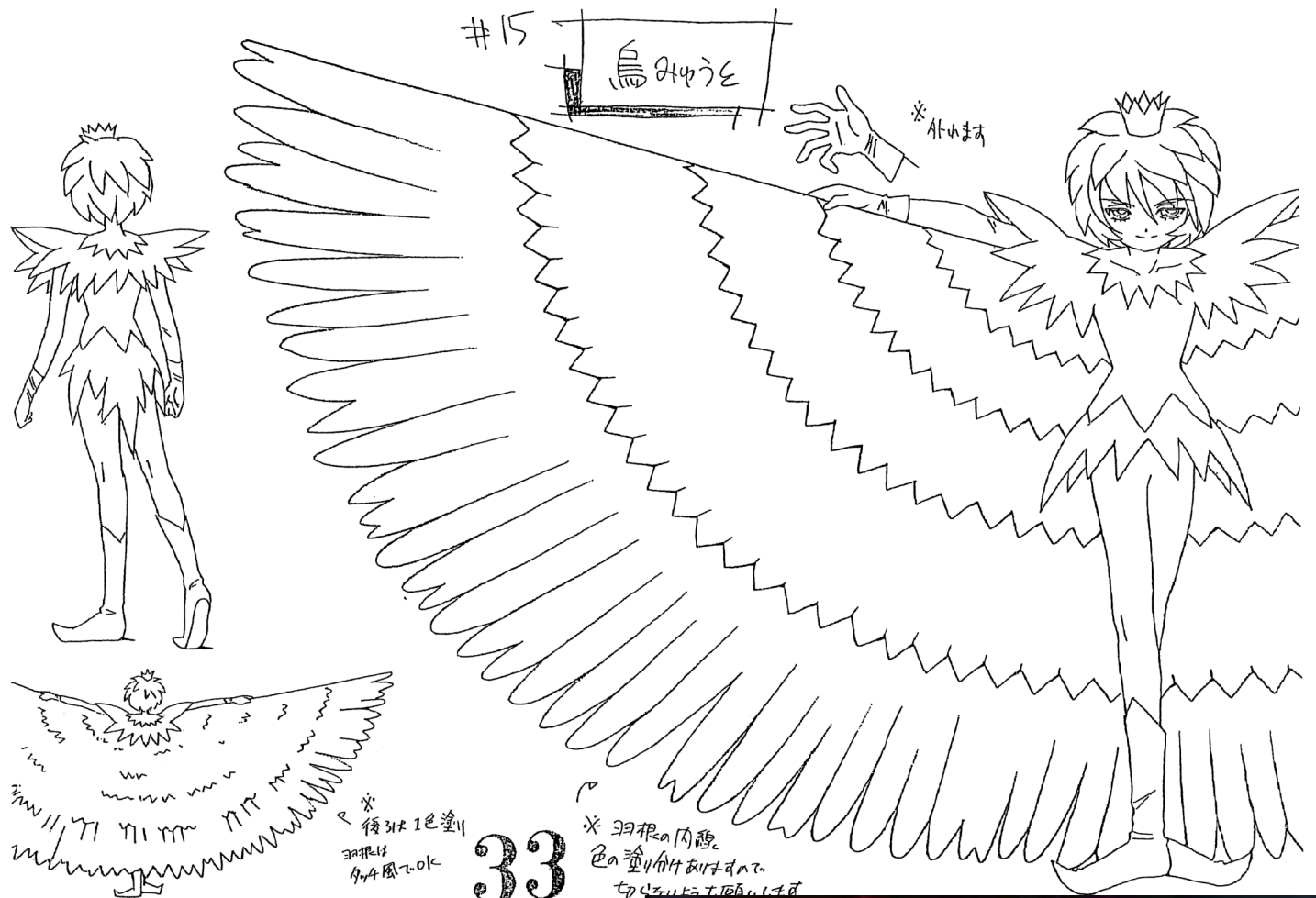


Raven Mytho

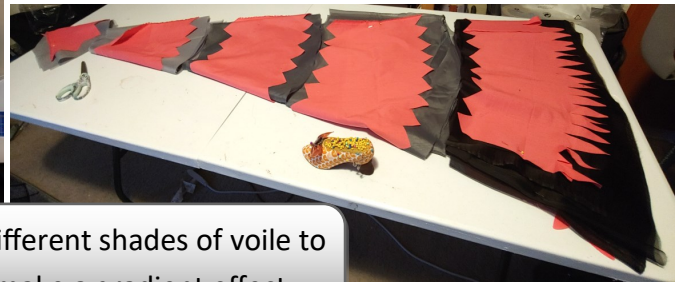
Princess Tutu

Leafnin Cosplay Sisters—master's division



Designing seamless Isis wings

I wanted full Isis wings without the section seams, and I wanted them to fit my height. So I designed tiered wings with triple-wide voile fabric using circle skirt math

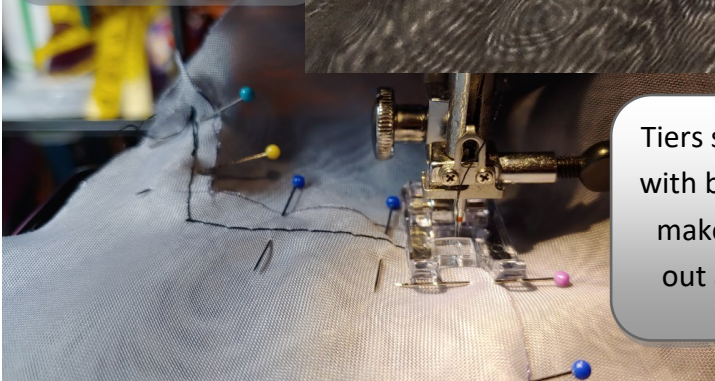


3 different shades of voile to make a gradient effect

Tiers are two-layered then fused together using a soldering iron to seal the edges



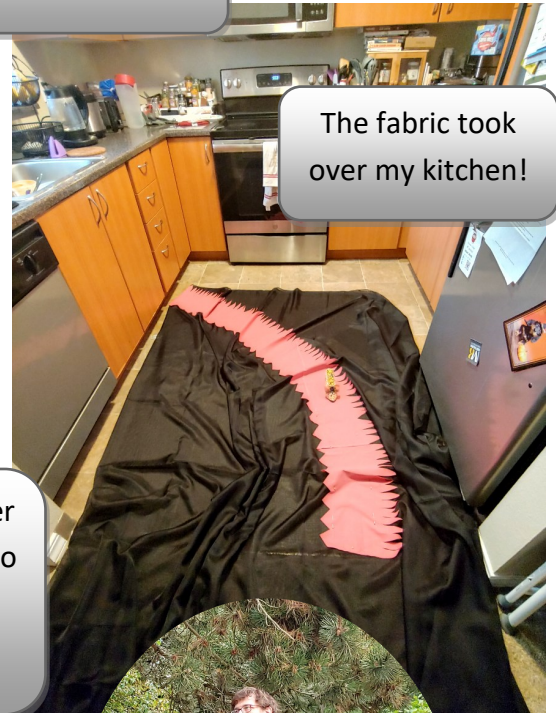
Tiers sewn together with black thread to make them stand out at a distance



2ft bamboo garden sticks inside the wings



The fabric took over my kitchen!



Cozy!



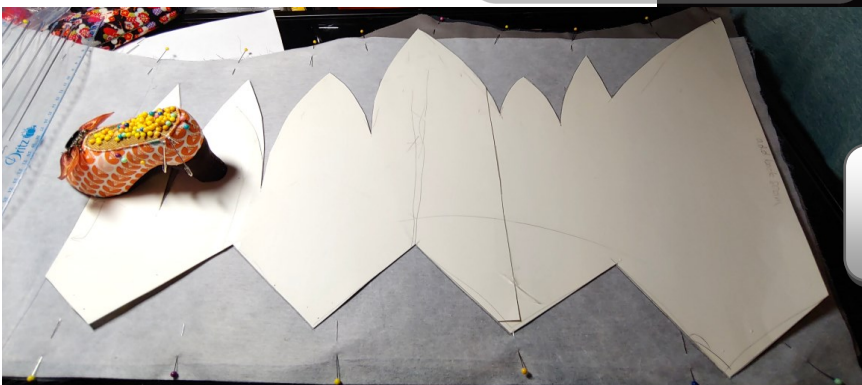
Creating the shirt



Shirt is layered, cotton on the body to support the details and shoulders and spandex on the arms for tight tapered sleeves for the gloves



Cotton body is a custom pattern made from a prior cosplay project

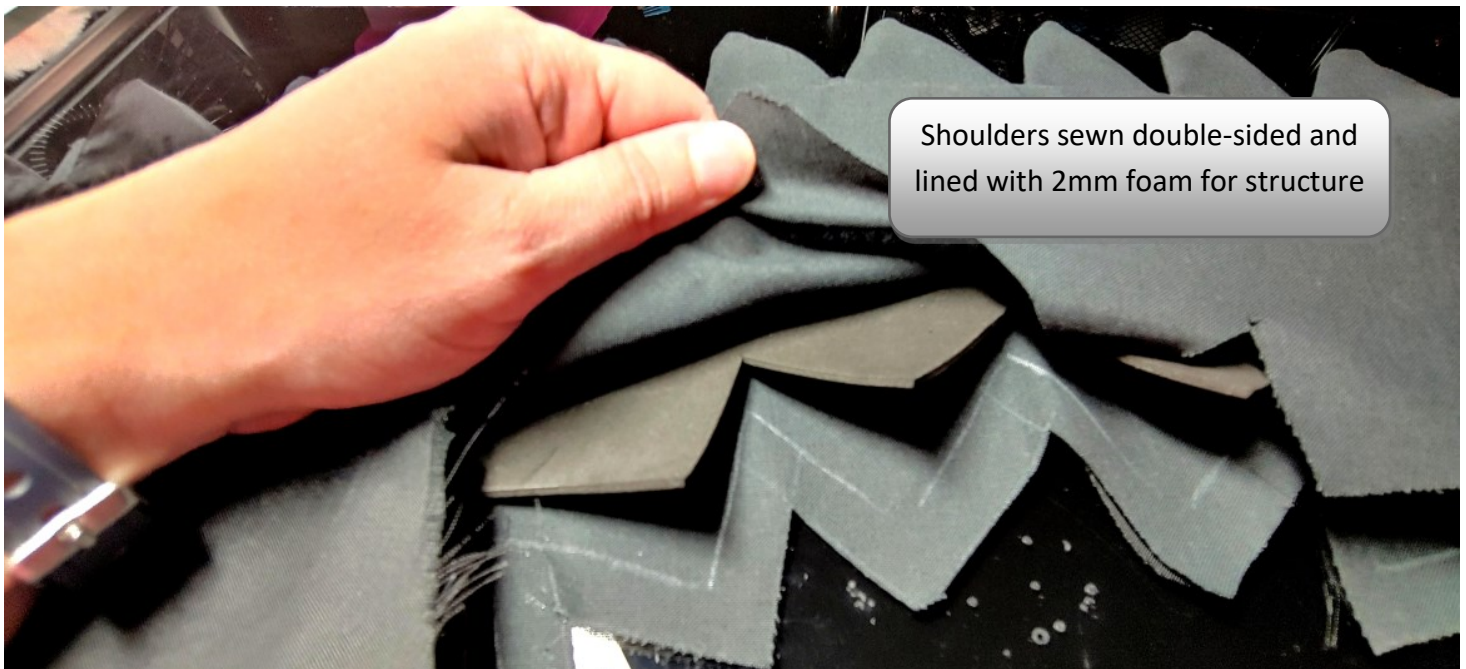


Bottom details were custom-patterned using poster board



Silver details are cotton covered in voile to make them shiny and stand out against the shirt.

Shoulders and neckline



Hair and crown



The crown is made of paper mache and a Tillamook ice cream sandwich box. After drying, the paper mache is sanded to reduce visibility of the edges when painted



Originally a Riku wig, it was trimmed, teased, and styled to look like Mytho's dragon fruit hairstyle